



BRUNSWICK ELECTRIC
MEMBERSHIP CORPORATION

MEMBER GUIDE TO HOME SOLAR

HOME SOLAR: WHAT IS NET METERING?



By installing solar panels at your service location, you become an independent generator of electricity. Under a net metering agreement with Brunswick Electric, you also benefit from grid access when you produce more power than you use. As a net metered member, your normal usage can be reduced, eliminated or you could generate more energy than your home consumes — all depending on the production of your system.



Typical Net Member

Your home will use all of the energy produced by your solar system before going to the Brunswick Electric system for additional power. Whenever your home pulls power from the Brunswick Electric system, that energy is recorded on the consumption channel of your net meter. The consumption channel represents what power your home needed after using all available solar energy, and is not a measurement of your home's total energy consumption.



Net Generator

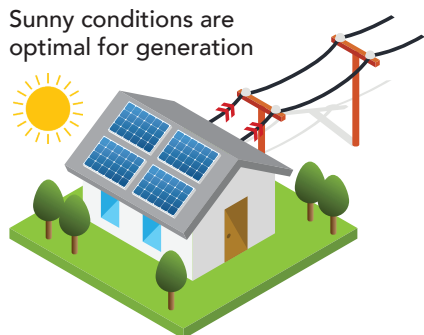
When you are producing more energy than your home needs, your excess energy goes back to the Brunswick Electric system. That "leftover" amount is reflected on the generation channel of your meter. The generation channel of your electric meter does not record the total production of your solar system, rather it tells you how much excess power you had after your home used all of the available solar power.



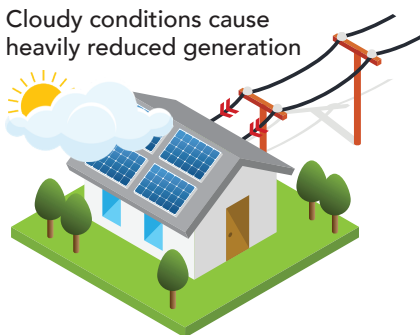
System Power

If your solar system is not generating any power, for example: night time, cloudy days or when your solar installation is offline because of component failure, your home will pull 100 percent of your power needs from the Brunswick Electric system. Any power pulled from the Brunswick Electric system is recorded on the consumption channel of your meter, and reflected as an Energy Charge on your bill.

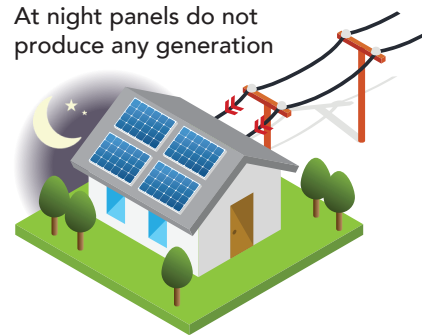
Sunny conditions are optimal for generation



Cloudy conditions cause heavily reduced generation



At night panels do not produce any generation



YOUR MONTHLY NET METERING BILL



As a Brunswick Electric member with a net meter agreement, your bill is a bit different because you consume both the energy produced by your solar electric system, and the energy you receive from Brunswick Electric.

Sample Bill



BRUNSWICK ELECTRIC
MEMBERSHIP CORPORATION

PO Box 826
Shallotte, NC 28459-0826

Shallotte Headquarters: 910-754-4391
Whiteville Office: 910-642-5011
Southport/Oak Island Office: 910-457-9808
Toll-Free 800-842-5871
Outage Reporting 800-682-5309
Pay by Telephone 866-934-6830

JOHN DOE
12345 MY STREET
ANYWHERE NC 28459



Statement Date	05/14/2022
Account Number	1234567890
Payment Due	06/04/2022

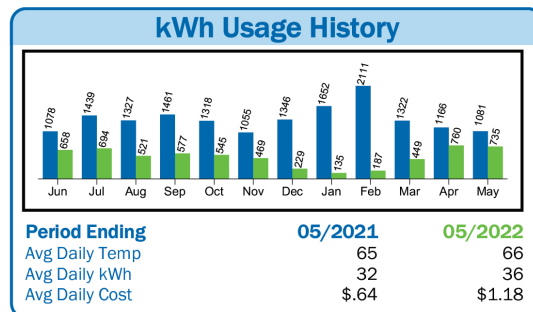
Service Summary	
Previous Balance	83.37
Adjustments	0.00
Payment Received 04/14/2022	Thank You! -83.37
Balance Forward	0.00
Current Charges	76.60
Total Amount Due 06/04/22	76.60

Important Message	
Beat the Peak is a voluntary program aimed at helping keep power costs down for the entire membership. Visit bemc.org/beat-peak for more info. Please call 800-842-5871 to verify the contact information on your account, so you don't miss the alerts.	

Current Bill Amount

My Meter #'s & Details

Account: 123456789		Phone #: (910) 555-0000		Service Address: 12345 My Street				Service Description: House			
Meter Number	Rate Schedule	Service Location	Services		Days	Readings		Meter	kWh	<div><div></div><div></div><div></div></div>	
			From	To		Previous	Present	Multiplier	Usage		
Con)1234567	31 - RNM NET CONSUMPTION	396-01-000	04/12/2022	05/12/2022	30	4581	5662	1	1,081		
Gen)1234567	32 - RNM NET GENERATION	396-01-000	04/12/2022	05/12/2022	30	41513	42248	1	735		
Net)1234567	30 - RESIDENTIAL NET METER	396-01-000	04/12/2022	05/12/2022	30	62931	63277	1	346		



Blue:
Consumption
Green:
Generation

Current Service Detail	
Base Facility Charge	34.75
346 kWh @ 0.1022	Billed kWh Line C 35.36
Reps Rider	0.33
Coal Ash Mgmt @.00333 Per Kwh	1.15
Sales Tax	5.01
Total Current Charges	76.60
BANKED USAGE BEFORE BILLING: 0	
BANKED USAGE AFTER BILLING: 0	

See below

Billing Detail Line Items

Line A: Amount of electricity BEMC delivered to the member for the month (ex. 1,081 kWh)

Line B: Amount of excess electricity generated by solar panels, not used by the member at that time and therefore sent back to the grid (Ex. 735 kWh)

Line C: Line A minus Line B = the kWh billed for each billing cycle (Ex. 1,081 - 735 = 346 kWh)

BANKED USAGE

Banked usage is excess energy greater than what was consumed during your billing cycle. This amount carries over to the next billing cycle to offset future energy use.

FAQ'S & ENERGY SOLUTION PROGRAMS



What is net metering? When your home uses more energy than your solar installation produces, it will draw from the grid and run through your electric meter, just like normal. When your solar installation produces more energy than your home needs, the amount of excess energy will be captured as it passes through your meter and is delivered to the BEMC grid. Your monthly bill will reflect a charge for the energy you drew from the grid and a credit for what you contributed back; you are responsible for the "net" difference. Most homes, however, consume the majority, if not all of the energy generated by the solar array.

How does net metering work? 1. Solar panels convert energy from the sun into electricity. 2. An inverter converts the electricity produced by the solar panels from direct current (DC) to alternating current (AC) for use in your home. 3. The energy is used in your home. 4. A bi-directional meter measures energy used and excess energy produced. 4. Excess energy from your solar panels not used in your home goes back to the electrical grid.

Why does my solar system generation not match BEMC generation? Your solar system monitoring shows the total kWh generated before any is consumed by the home, our meter only captures the excess kWh that flows back to the grid.

Will my solar continue to operate during an outage? No. Grid-tie solar systems operate in parallel with Brunswick Electric's distribution system and have a safety feature that shuts the system down in the event of an outage to prevent backfeed, causing an unsafe condition for personnel restoring power. An emergency backup system (generator, batteries) would be needed to supplement power in the event of an outage.

How much is excess generation credited at? Excess generation beyond consumption is credited at BEMC's avoided cost, which is reviewed on an annual basis.

BEMC Energy Solution Programs



Beat the Peak is a voluntary program to help hold down power costs – and keep rates affordable. Wholesale power costs more during peak times and reducing energy consumption during these events can keep everyone's electric bill as low as possible.



Through the Weatherization Loan program, the RCSC allows members to borrow up to \$10,000 for their home or business at a 7% APR to improve their energy efficiency. Payments are generally spread over 5 years and can be billed on your monthly energy bill.